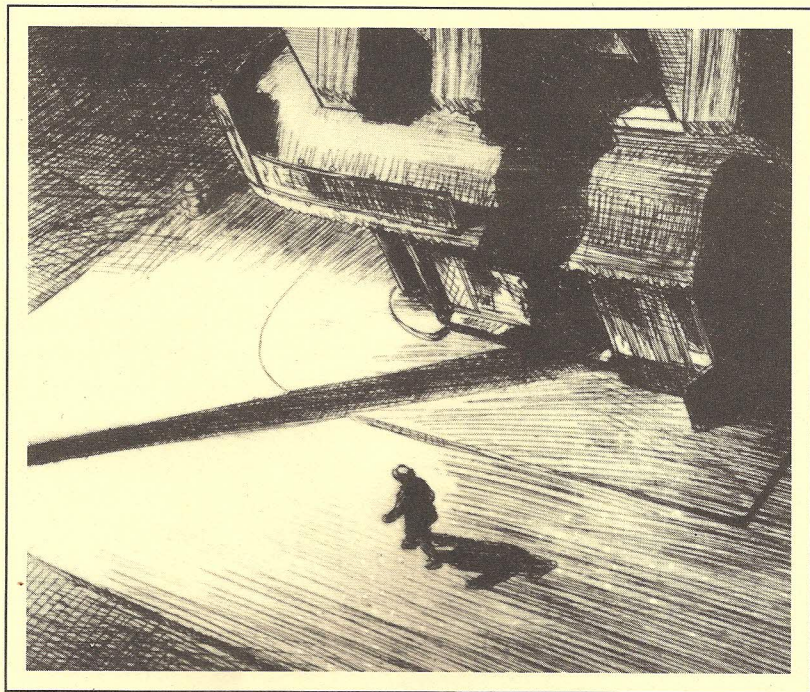


Y BLYNYDDOEDD CYNNAR

EDWARD HOPPER

THE FORMATIVE YEARS



Arddangosfa deithiol a drefnwyd gan Amgueddfa Gelf Americanaidd Whitney, Efrog Newydd

AMGUEDDFA AC ORIEL GELF CASNEWYDD, GWENT

10 IONAWR - 14 CHWEFROR 1981

Amgueddfa ac Oriel Gelf Casnewydd, John Frost Square, Casnewydd, Gwent

Dydd Llun - Dydd Gwener 10a.m. - 5.30p.m. Dydd Sadwrn 9.30a.m. - 4p.m.

Cyflwynwyd gan Gyngor Celfyddydau Cymru

A travelling exhibition organized by the Whitney Museum of American Art, New York

NEWPORT MUSEUM & ART GALLERY, GWENT

10 JANUARY - 14 FEBRUARY 1981

Newport Museum and Art Gallery, John Frost Square, Newport, Gwent

Monday - Friday 10a.m. - 5.30p.m. Saturday 9.30a.m. - 4p.m.

Presented by the Welsh Arts Council

EDWARD HOPPER

Y BLYNYDDOEDD CYNNAR

Y mae Edward Hopper (1882-1967) yn fwyaf adnabyddus fel un a beintiai'r byd o'i gwmpas mewn arddull realaidd, ac eto yn ystod y cyfnod cynnar a adawodd ei ôl arno fel arlunydd, tan 1925, bu'n ei gynnal ei hun drwy weithio fel arlunydd masnachol a darluniwr. O 1915 tan 1924, pan gynhaliwyd ei arddangosfa un-dyn gyntaf mewn oriel yn Efrog Newydd, cynhyrchodd hefyd gsgliad ardderchog o ysgythriadau ac engrafiadau sychbwynt.

Bydd yr arddangosfa yn canolbwyntio ar ddatblygiad cynnar Hopper, ond bydd hefyd yn cynnwys peintiadau olew, lluniau dyfrlliw a lluniadau o'i gyfnod aeddfed.

Daw'r deunydd a arddangosir yma o Gymynrodd Hopper i Amgueddfa Celfyddyd Americanaidd Whitney yn Efrog Newydd (rhoddwyd ym 1969 gan weddw'r arlunydd).

Yn ogystal, dangosir yr arddangosfa, EDWARD HOPPER: THE ART AND THE ARTIST, Oriel Hayward, Llundain o'r 11 Chwefror - 29 Mawrth 1981.

Gwahoddir chwi i fod yn bresennol yn yr agoriad yn Amgueddfa ac Oriel Gelf Casnewydd nos Wener 9 Ionawr am 7.30p.m.

Darperir gwŵn

EDWARD HOPPER

THE FORMATIVE YEARS

Edward Hopper (1882-1967) is known primarily as a realist painter of his surroundings, yet during his formative years, until 1925, he supported himself by working as a commercial artist and illustrator. From 1915 until 1924, the date of his first one-man exhibition in a New York gallery, he also produced an outstanding group of etchings and drypoints.

The exhibition will focus on Hopper's early development, but will also include oil paintings, watercolours and drawings of his mature period.

The material in the exhibition is drawn from the Hopper Bequest to the Whitney Museum of American Art in New York (donated in 1969 by the artist's widow).

In addition, the exhibition EDWARD HOPPER: THE ART AND THE ARTIST, will be shown at the Hayward Gallery, London, 11 February - 29 March 1981.

You are invited to attend the opening at Newport Museum and Art Gallery on Friday 9 January at 7.30p.m.

Wine will be served